

G MASTER Tomorrow's lenses today, from Sony



Lens standards are changing

Advances in camera performance and soaring creative ideals demand a new approach to lens technology. Lenses must evolve to remain ahead of the curve.

With a clear vision of cameras of the future, Sony have now redefined the lens.

High resolution and appealing bokeh together at last, from the leader in imaging innovation to provide new creative possibilities for imaging and art.



A new level of resolution

For a high-resolution future

Resolution unlocks details that are the essence of beauty. These extraordinary lenses will still be delivering breathtaking detail well into the future.



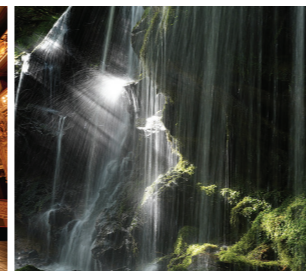
Truth is in the details

The highest design standards ever deliver superb detail and texture. Optical performance shows we are serious about resolution.

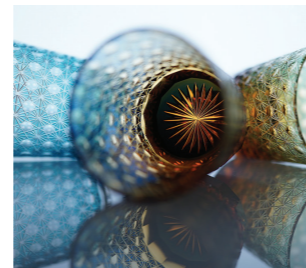
The images are proof:



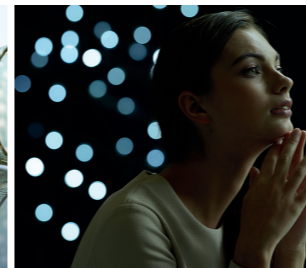
Shot using SEL1224GM



Shot using SEL35F14GM



Shot using SEL24F14GM



Shot using SEL135F18GM

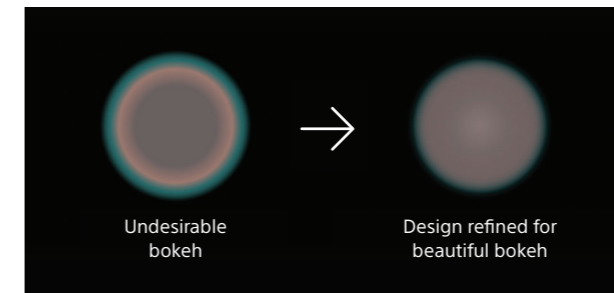
A new level of bokeh

Bring your vision to life

Beyond the ordinary to a realm of visual beauty, 0.01-micron precision in new XA lens elements captures truth and enchantment in every image.



Advanced computer simulation aids bokeh design



Superior surface precision enhances bokeh

Aspherical lenses are significantly more difficult to manufacture than simple spherical types. XA lens elements achieve extreme surface precision that eliminates optical imperfections for the most beautiful bokeh you've ever seen.

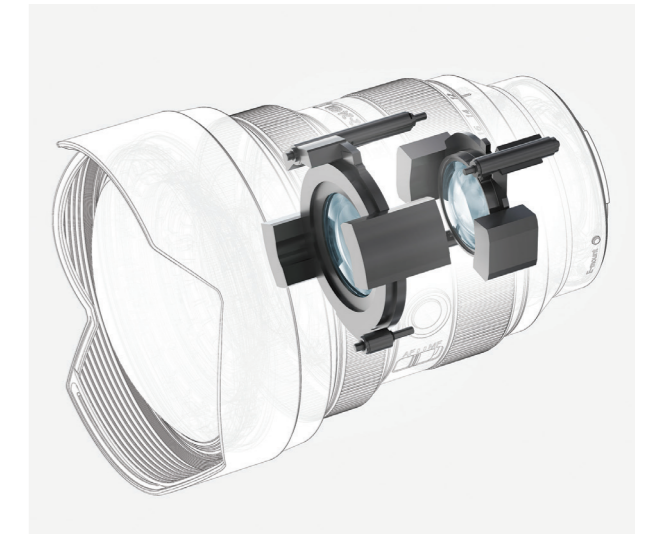
Advanced simulation aids bokeh design

Advanced computer simulation technology is employed to design superb bokeh into the optics achieving luxuriously smooth, soft background bokeh without jarring lines or edges.

A new level of operability

More than just stunning images

Unparalleled imaging performance is matched with outstanding speed, efficiency and reliability to fully meet professional requirements.



Sophisticated actuators refine focus

Industry leading actuator technology produces faster, more precise focusing in manual or auto mode. Unerring focus precision helps to realize the full potential of these extraordinary lenses.

Flawless operation and reliability

Solid construction, comprehensive controls, and dust and moisture resistant design are just a few of the many features that add up to impeccable performance in any shooting situation.



GM Prime lenses



SEL135F18GM

FE 135mm F1.8 GM
Premium G Master Series
Telephoto Prime Lens



SEL85F14GM

FE 85mm F1.4 GM
Premium G Master Series
Midi-range Telephoto Prime Lens



SEL35F14GM

FE 35mm F1.4 GM
Premium G Master Series
Wide-angle Prime Lens



SEL100F28GM

FE 100mm F2.8 STF GM OSS
Premium G Master Series
Mid-range Telephoto Prime Lens



SEL2470GM

FE 24-70mm F2.8 GM
Premium G Master Series
Mid-range Telephoto Prime lens



SEL24F14GM

FE 24mm F1.4 GM
Premium G Master Series
Wide-range Prime lens



Mount Type / Format	E-Mount / 35mm Full-Frame	E-Mount / 35mm Full-Frame	E-Mount / 35mm Full-Frame	E-Mount / 35mm Full-Frame	E-Mount / 35mm Full-Frame	E-Mount / 35mm Full-Frame
Focal Length (mm)	135mm	85mm	35mm	100mm	24-70mm	24mm
35mm Equivalent Focal-Length (APS-C)	202.5mm	127.5mm	52.5mm	150mm	36-105mm	36mm
Lens Groups / Elements	10-13	8-11	10-14	10-13 (exc. APD element)	13-18	10-13
Angle of View	18° (35mm) / 12' (APS-C)	29° (35mm) / 19° (APS-C)	63° (35mm) / 44° (APS-C)	24° (35mm) / 16° (APS-C)	84°-34° (35mm) / 61°-23° (APS-C)	84° (35mm) / 61° (APS-C)
Aperture	F1.8 (Max) / F22 (Min)	F1.4 (Max) / F1.6 (Min)	F1.4 (Max) / F1.6 (Min)	F2.8 (Max) / F20 (Min)	F1.4 (Max) / F1.6 (Min)	F1.4 (Max) / F1.6 (Min)
Aperture Blades / Aperture Type	11 / Circular	11 / Circular	11 / Circular	11 / Circular	9 / Circular	11 / Circular
Minimum Focus Distance	0.7m	AF 0.85m, MF 0.8m	AF 0.27m, MF 0.25m	0.28m	AF 0.85m, MF 0.8m	0.24m
Maximum Magnification Ratio (X)	0.25x	0.12x	x 0.23 (AF) x 0.26 (MF)	0.14x	0.24x	0.17x
Filter Diameter (mm)	82mm	77mm	67mm	72mm	82mm	67mm
Dimensions (D x L) / Weight	89.5 x 127mm / 950g	89.5 x 107.5mm / 820g	76 x 96mm / 524g	85.2 x 118.1mm / 700g	87.6 x 136mm / 886g	75.4 x 92.4mm / 445g

GM Zoom lenses



SEL1635GM

FE 16-35mm F2.8 GM
Premium GM Series Wide-angle
Zoom Lens and Smooth Bokeh



SEL1224GM

FE 12-24mm F2.8 GM
Premium G Master Series
Ultra-wide Angle Zoom Lens



SEL70200GM

FE 70-200mm F2.8 GM OSS
Premium G Master Series
Telephoto Lens



SEL100400GM

FE 100-400mm F4.5-5.6 GM
Premium G Master Series
Super-telephoto Lens



SEL400F28GM

FE 400mm F2.8 GM OSS
Premium GM Series Large-aperture
Super-telephoto Zoom Lens



SEL600F40GM

FE 600mm F4 GM OSS
Premium GM Series Large-aperture
Super-telephoto Zoom Lens

Mount Type / Format	E-Mount / 35mm Full-Frame	E-Mount / 35mm Full-Frame	E-Mount / 35mm Full-Frame	E-Mount / 35mm Full-Frame	E-Mount / 35mm Full-Frame	E-Mount / 35mm Full-Frame
Focal Length (mm)	16-35mm	12-24mm	70-200mm	100-400mm	400mm	600mm
35mm Equivalent Focal-Length (APS-C)	24-52.5mm	18-36mm	105-300mm	150-600mm	600mm	900mm
Lens Groups / Elements	13-16	14-17	18-23	16-22	17-23 (inc. one filter)	18-24 (inc. one filter)
Angle of View	107°-63° (35mm) / 83°-44° (APS-C)	122°-84° (35mm) / 99°-61° (APS-C)	34°-12°-30' (35mm) / 23°-8° (APS-C)	24°-6°-10' (35mm) / 26°-4°-10' (APS-C)	6°10' (35mm) / 4°10' (APS-C)	4°10' (35mm) / 4°10' (APS-C)
Aperture	F2.8 (Max) / F22 (Min)	F2.8 (Max) / F22 (Min)	F2.8 (Max) / F22 (Min)	F4.5-F5.6 (Max) / F32-40 (Min)	F2.8 (Max) / F22 (Min)	F4 (Max) / F22 (Min)
Aperture Blades / Aperture Type	11 / Circular	9 / Circular	11 / Circular	9 / Circular	11 / Circular	11 / Circular
Minimum Focus Distance	0.28m	0.85m	0.96m	0.98m	2.7m	4.5m
Maximum Magnification Ratio (X)	0.19x	0.14x	0.25x	0.35x	0.16x	0.14x
Filter Diameter (mm)	-	-	40.5mm	77mm	40.5mm (slot-in)	40.5mm
Dimensions (D x L) / Weight	88.5 x 121.6mm / 680g	85.2 x 118.1mm / 700g	88 x 200mm / 1480g	93.9 x 205mm / 1395g	158.1 x 359mm / 2895g	163.6 x 449mm / 3040g